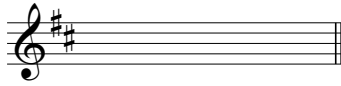


FUNDAMENTALS OF MUSIC THEORY EXAM

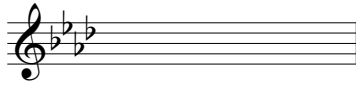
Maximum Time Allowance: 30 Minutes

I. Keys and Scales.

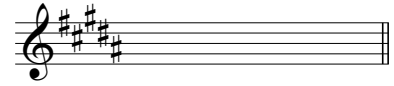
A. Name the major or minor key for the given key signature.



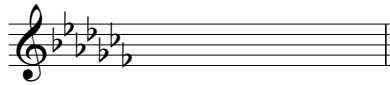
Major: D



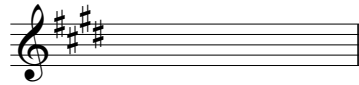
Minor: F



Minor: G#



Minor: A \flat



Major: E



Major: B \flat

B. Write each of the requested scales in the space provided, ascending and descending. Use whole notes only. Provide the proper key signature and use accidentals only where necessary.



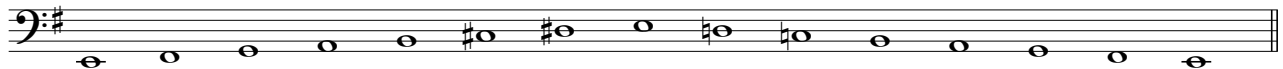
D \flat Major



D minor, natural form



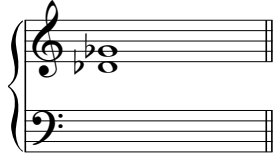
A# minor, harmonic form



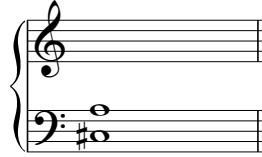
E minor, melodic form

II. Intervals.

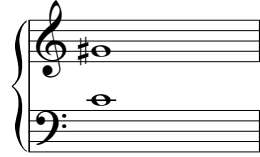
A. Name each of the following intervals.



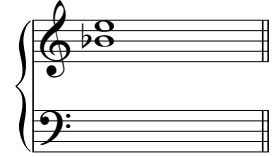
P4



m6



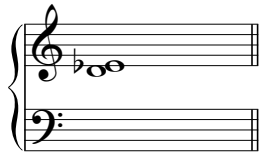
A5



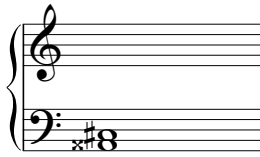
A4



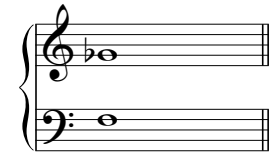
A6



m2

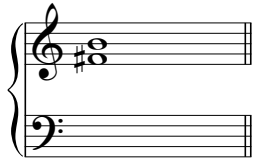


d3

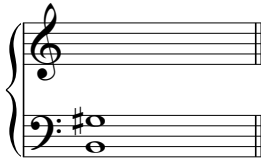


m9 or m2

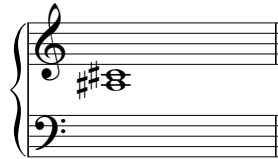
B. Add a second note to the following at the interval given.



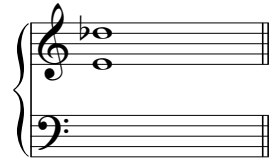
P4 below



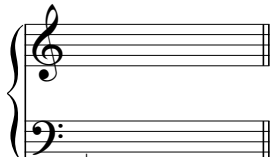
M6 below



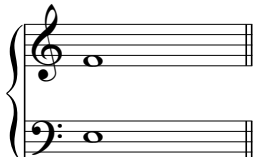
m3 above



d7 below



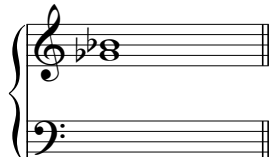
d4 above



m9 above



A6 above



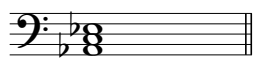
M3 below

C. Short answers.

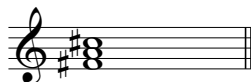
- i. The inversion of a diminished fourth is an Augmented fifth.
- ii. An interval enharmonically equivalent to a minor seventh is an Augmented sixth.
- iii. The relative key to E-flat major is C minor.
- iv. The parallel key to A minor is A Major.
- v. The simple version of a Perfect 11th is a Perfect 4th.

III. Chords.

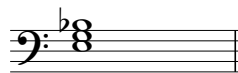
A. Spell the requested chords on the staff provided. Use accidentals, not key signatures.



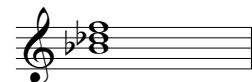
A \flat Major



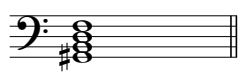
F \sharp minor



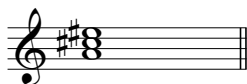
E dim.



B \flat minor



G \sharp dim.7



A Aug.

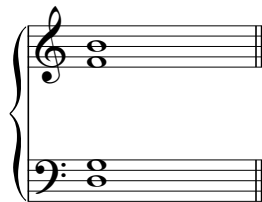


E \flat Dom.7



D \sharp Major

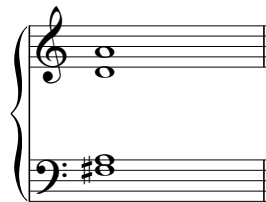
B. Name the following triads or seventh chords. Indicate root, quality, and inversion following the example provided.



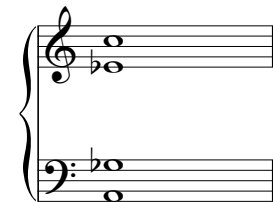
Root: G
Quality: Dom.7
Inversion: 2nd



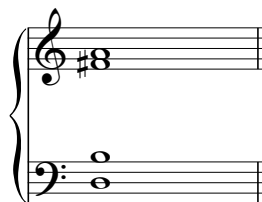
Root: E \flat
Quality: Aug.
Inversion: root



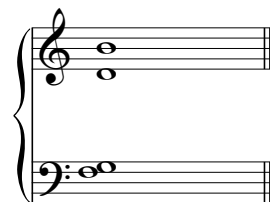
Root: D
Quality: Major
Inversion: 1st



Root: A
Quality: dim.7
Inversion: root



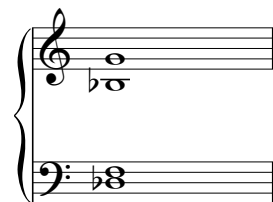
Root: B
Quality: m7
Inversion: 1st



Root: G
Quality: Dom.7
Inversion: 3rd



Root: D
Quality: Major
Inversion: 2nd



Root: G
Quality: half-dim.7
Inversion: 2nd