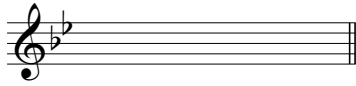


# FUNDAMENTALS OF MUSIC THEORY EXAM

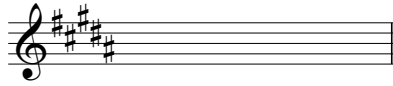
Maximum Time Allowance: 30 Minutes

## I. Keys and Scales.

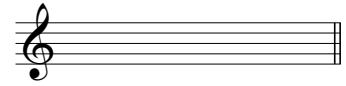
A. Name the major or minor key for the given key signature.



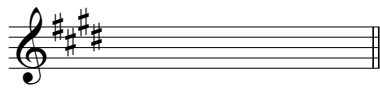
Minor: \_\_\_\_\_



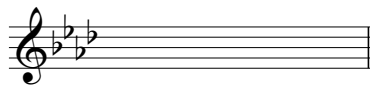
Major: \_\_\_\_\_



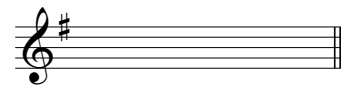
Major: \_\_\_\_\_



Minor: \_\_\_\_\_



Major: \_\_\_\_\_

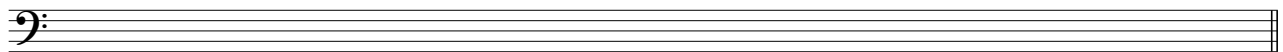


Minor: \_\_\_\_\_

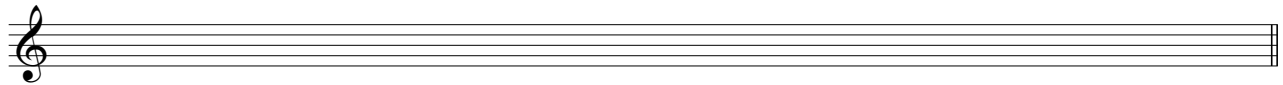
B. Write each of the requested scales in the space provided, ascending and descending. Use whole notes only. Provide the proper key signature and use accidentals only where necessary.



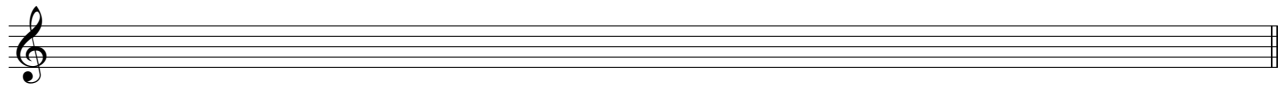
F# Major



B minor, harmonic form



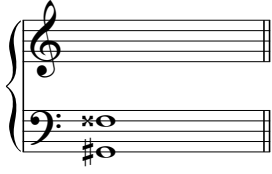
F minor, natural form



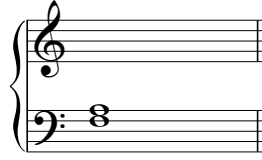
E $\flat$  minor, melodic form

**II. Intervals.**

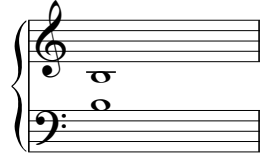
A. Name each of the following intervals.



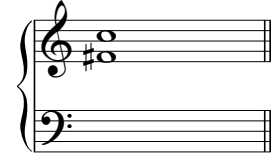
\_\_\_\_\_



\_\_\_\_\_



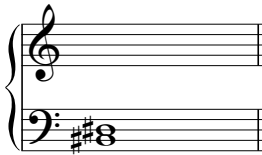
\_\_\_\_\_



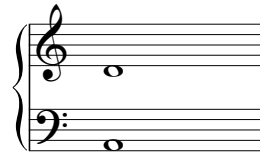
\_\_\_\_\_



\_\_\_\_\_



\_\_\_\_\_

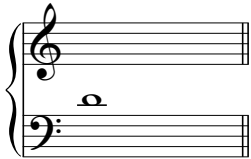


\_\_\_\_\_

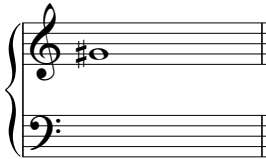


\_\_\_\_\_

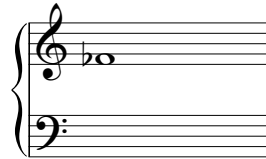
B. Add a second note to the following at the interval given.



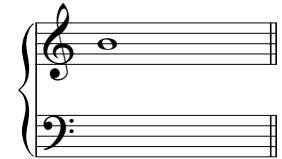
m6 above



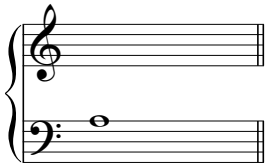
A6 below



P8 above



m2 above



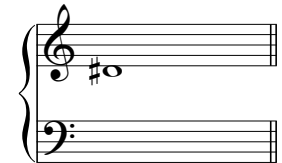
P12 below



d5 below



d3 above



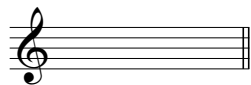
m3 below

C. Short answers.

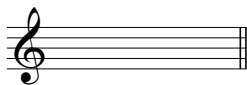
- i. The inversion of a Major seventh is \_\_\_\_\_.
- ii. An interval enharmonically equivalent to an Augmented fourth is \_\_\_\_\_.
- iii. The relative key to B minor is \_\_\_\_\_.
- iv. The parallel key to A $\flat$  Major is \_\_\_\_\_.
- v. The simple version of a minor 9th is \_\_\_\_\_.

**III. Chords.**

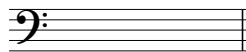
A. Spell the requested chords on the staff provided. Use accidentals, not key signatures.



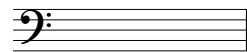
F Minor



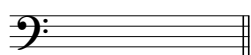
B Dom.7



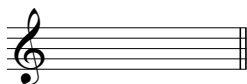
A<sup>b</sup> Aug.



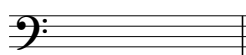
B<sup>b</sup> dim.



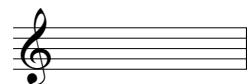
A<sup>#</sup> min.



C half-dim.7

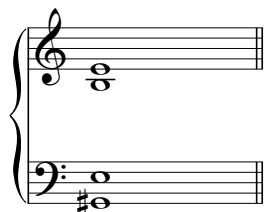


E Major



F Maj.7

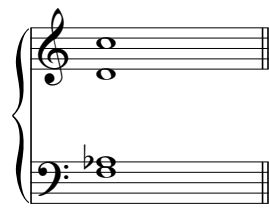
B. Name the following triads or seventh chords. Indicate root, quality, and inversion following the example provided.



Root: E

Quality: Major

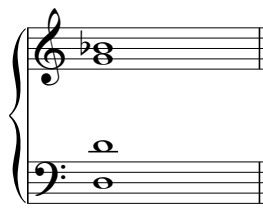
Inversion: 1st



\_\_\_\_\_

\_\_\_\_\_

\_\_\_\_\_



\_\_\_\_\_

\_\_\_\_\_

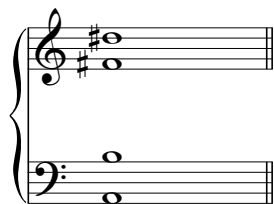
\_\_\_\_\_



\_\_\_\_\_

\_\_\_\_\_

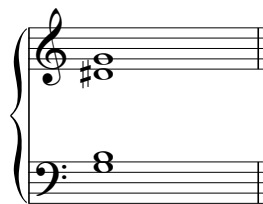
\_\_\_\_\_



\_\_\_\_\_

\_\_\_\_\_

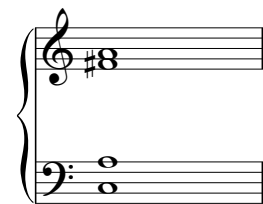
\_\_\_\_\_



\_\_\_\_\_

\_\_\_\_\_

\_\_\_\_\_



\_\_\_\_\_

\_\_\_\_\_

\_\_\_\_\_



\_\_\_\_\_

\_\_\_\_\_

\_\_\_\_\_